



Why should you engage with Artisanal and Small-scale mining communities to make a real difference?

10 November 2021



RESPONSIBLE
JEWELLERY
COUNCIL



RESPONSIBLE JEWELLERY COUNCIL SUPPORTS THE SUSTAINABLE DEVELOPMENT GOALS

Contents

01

Who are the RJC
& ARM?

02

RJC & ARM
Collaboration

03

What is ASM?

04

Why engage with ASM?

05

Your choices
have impacts

06

Questions

01

Who are the RJC & ARM?

The Alliance for Responsible Mining

International non-profit organisation with headquarters in Colombia, working in 11 countries with ASM communities

GOAL

Transform the ASM sector into a socially and environmentally responsible activity, while improving the quality of life of artisanal miners, their families and communities.

SUSTAINABLE MINES PROGRAM

Offering a progressive path towards responsible, profitable and sustainable mining, helping miners access formal global markets and facilitating a supply solution to the gold industry.



Fairmined Certification

Certification for **artisanal and small-scale mining** organisations according to the Fairmined Standard, assuring responsible legal, technical, labour, environmental and social practices

A market incentive of 4USD/g

Flexible sourcing models to access 'gold to be proud of', which is **traceable, certified Fairmined** gold from responsible mining organizations



Responsible Jewellery Council

International standards and certification organisation for the jewellery and watch industry working in 71 countries, headquarters in London.

MISSION

We strive to be the recognised standards and certification organisation for supply chain integrity and sustainability in the global jewellery and watch industry.

VISION

Our vision is a responsible world-wide supply chain that promotes trust in the global jewellery and watch industry.



RJC Certification

The 2019 Code of Practices (COP) standard is the mandatory standard for all RJC members and is designed to improve ethical, social, human rights and environmental conditions.

The COP applies to gold, silver, PGM, diamond and coloured gemstone supply chains.

RJC also offers our 2017 Chain of Custody certification, which is voluntary and only applies to precious metals.

Our CoC standard defines an approach for companies to handle and trade gold, silver and platinum group metals in a way that is fully traceable and responsibly sourced.



02

RJC & ARM Collaboration

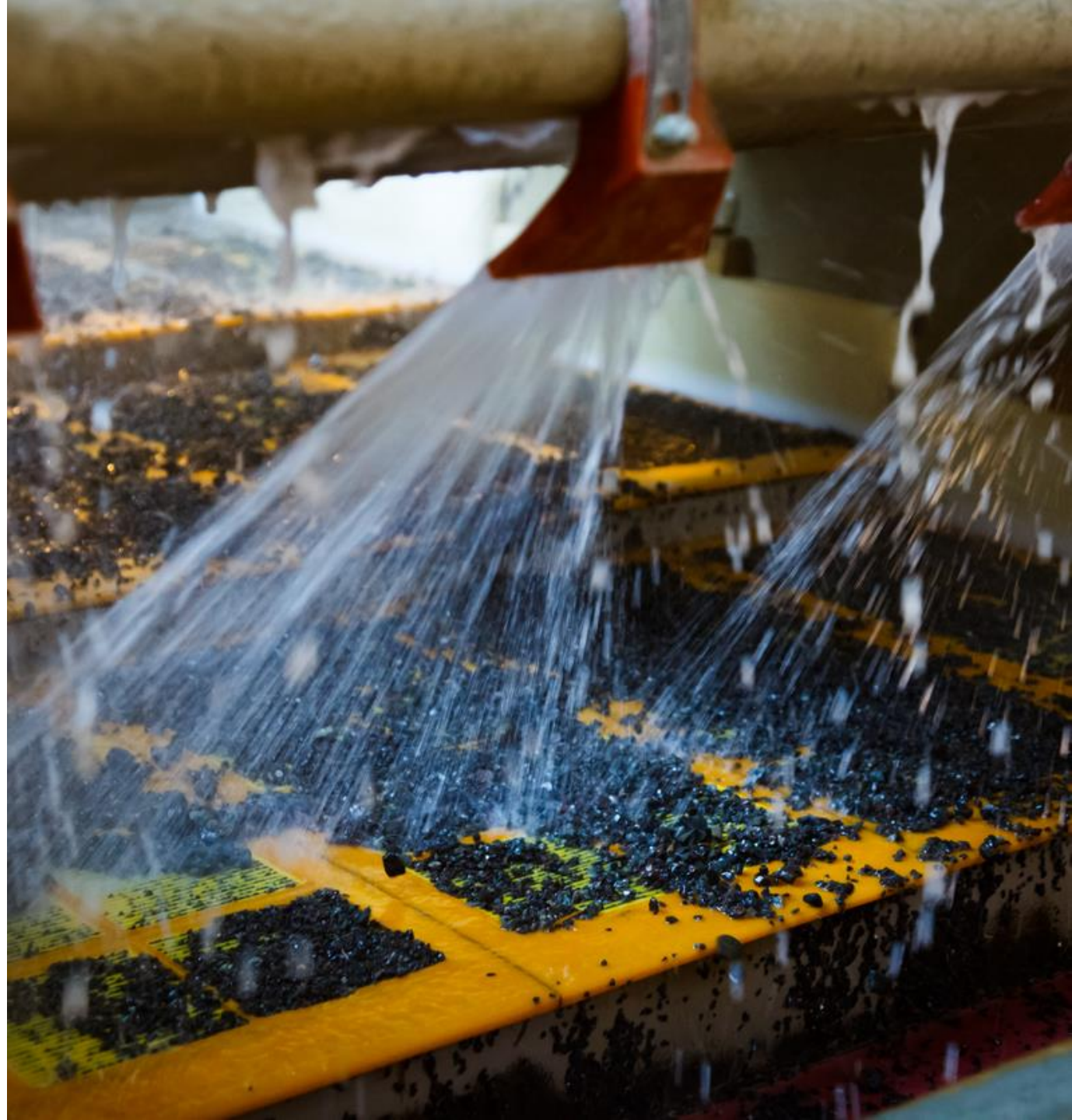
RJC & ARM Collaboration

- Standards Development Contribution.
- Fairmined Material Recognition by RJC.
- Joint audits for members participating in both initiatives.



Recognition

- RJC COP (provision 6 & 7), Fairmined certification and CRAFT Code all utilise OECD Guidance for Responsible Sourcing from Conflict Affected and High-Risk Areas.
- Material from the mines certified to the Fairmined Standard can be traded under the CoC Standard in combination with other CoC materials.



03

What is ASM?

What is ASM?

- Artisanal mining is often performed in rural communities in developing nations, using simple tools or technologies.
- Small-scale mining is relative and varies according to regional context.
- ASM is responsible for 20% of global gold production.
- It employs 90% of the workforce behind gold extraction.
- >20 Mio gold miners worldwide, >150 Mio ASM miners.



Issues

- Illegality and informality or the funding of armed conflict.
- Environmental destruction and impact.
- Poor health and safety of workers.
- Human rights violations and child labour.
- Lack of enabling environment to improve their conditions.



04

Why engage with ASM?

Why engage with ASM?

Risks & Reputation

- Risks of not engaging.
- Excluding the sector doesn't contribute to solving its problems but deteriorates the reputation of the sector as a whole.

Corporate Social Responsibility

- The biggest positive economic, social and environmental impact to be made in the gold industry is in ASM.

A holistic sourcing policy should be inclusive of gold from artisanal and small-scale mining.



Further Benefits

Assurance

- 3rd party certification of your ASM source.

Differentiation & Positioning

- Online searches for ethical jewellery have been increasing by 75% annually.

Brand Strategy

- Added emotional value and storytelling.
- Contribution to the Sustainable Development Goals.



RJC Requirements for Sourcing ASM

- COP 8 sets out the RJC's requirements for sourcing directly from ASM and Small Scale Mining.
- Confirm that the miners are operating legally, or do your best to support their legalisation.
- Conduct due diligence identify any human rights, environmental or health and safety risks posed to the miners and then work with them to remediate them.
- Sourcing from ASM producers that adhere to recognised standards.



ASM Gold Sourcing Myths

- There is not enough ASM gold available for our demand.
- If I only use a part of my sourcing from responsible ASM, what story can I tell about my other gold.
- Accessing ASM gold is difficult.
- The premium on ASM gold is too expensive.
- It is too complex to make changes to my supply/production chain.
- Recycled gold is more responsible than mined gold.



05

Your choices have impacts

Asomuselupaz, Colombia

- 57 independent female mineral selectors from informality to formality
- First formal sales – 20% increase in income



Cecomip, Peru

- Installation of a new plant to eliminate mercury from their gold processing.
- Female empowerment through income diversification.
- From containers to decent offices.



Chede, Colombia

- Formalising contracts of all their workers.
- Monthly occupational health and safety committee to improve worker's wellbeing.
- Continuous investments to further reduce their environmental impact.



ASM Impact

- External and continuous support is needed.
- Lack of tools, knowledge, financial means to start this journey on their own.
- Raising awareness is crucial.
- Incentives are necessary.



A detailed close-up photograph of a mechanical watch movement. The image shows various gears, jewels, and metal components. The lighting is dramatic, highlighting the intricate details and textures of the metal. The background is dark and out of focus, emphasizing the foreground components.

training@responsiblejewellery.com
arm@responsiblemines.org



RESPONSIBLE
JEWELLERY
COUNCIL

LEAD WITH PURPOSE . . . INSPIRE WITH TRUST
CONTRIBUTE TO DEVELOPMENT

Responsible Jewellery Council,
Second Floor, Quality House,
5-9 Quality Court, Chancery Lane,
London, WC2A 1HP.

www.responsiblejewellery.com

communications@responsiblejewellery.com
+44 (0)20 7321 0992

CONNECT WITH US

Website: www.responsiblejewellery.com

Email: info@responsiblejewellery.com

Twitter: @RJCJewellery

Facebook: @responsibleJewellery

LinkedIn: [/company/responsiblejewellerycouncil](https://www.linkedin.com/company/responsiblejewellerycouncil)

© 2021 Responsible Jewellery Council. All rights reserved.

Please seek written permission from Responsible Jewellery Council before sharing, using or adapting any ideas, information or images contained in this presentation.

The Responsible Jewellery Council is the trading name of the Council for Responsible Jewellery Practices Ltd. The Council for Responsible Jewellery Practices Ltd, Second Floor, Quality House, 5-9 Quality Court, Chancery Lane, London, WC2A 1HR, UK. The Council for Responsible Jewellery Practices Ltd is registered in England and Wales with company number 05449042.